

PRE-CHECK

Wireless function (Remote control) will not operate.

To make the vehicle be in the initialized condition.
Initialized condition is the condition when the following conditions are satisfied.

- (1) Key plate has not been inserted in the ignition key cylinder.
- (2) All the doors are closed. (Door warning light is off.)
- (3) All the doors are locked.
- (4) The buzzer volume is maximum.

Basic function check

With a standard operation, when repeating the operations of UNLOCK switch and LOCK switch three times or more alternately, check the operation of UNLOCK – LOCK from 3rd time onward.

- Following procedures are standard operation.

- (1) Keep away approx. 1 M to the right direction from the outside handle of a driver's seat.
- (2) Point the transmitter toward the vehicle and press either of transmitter switches for about 1 sec.

<Reference>

As of the security function, even the wireless function is normal, there may be the case that only UNLOCK operation will not work.

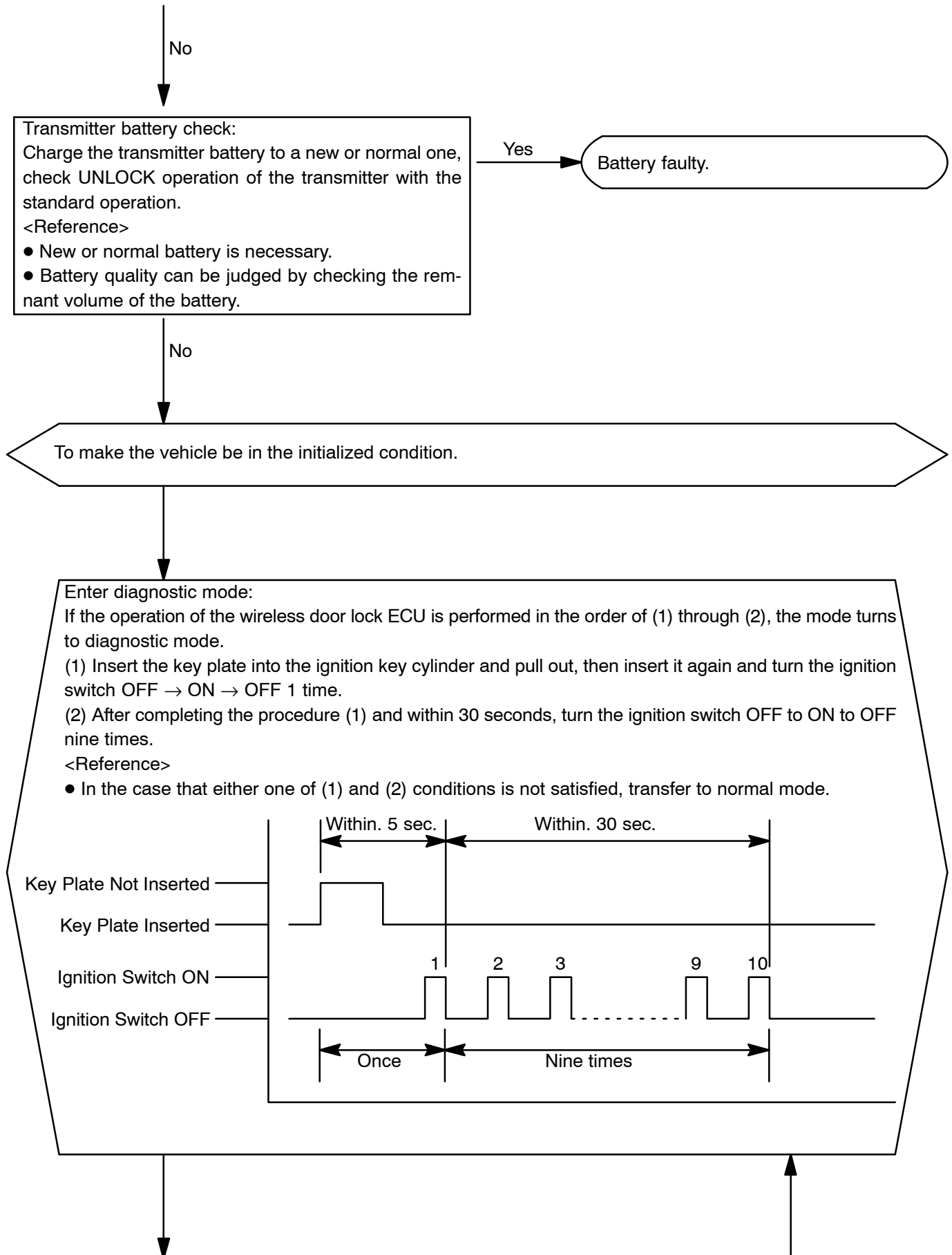
No

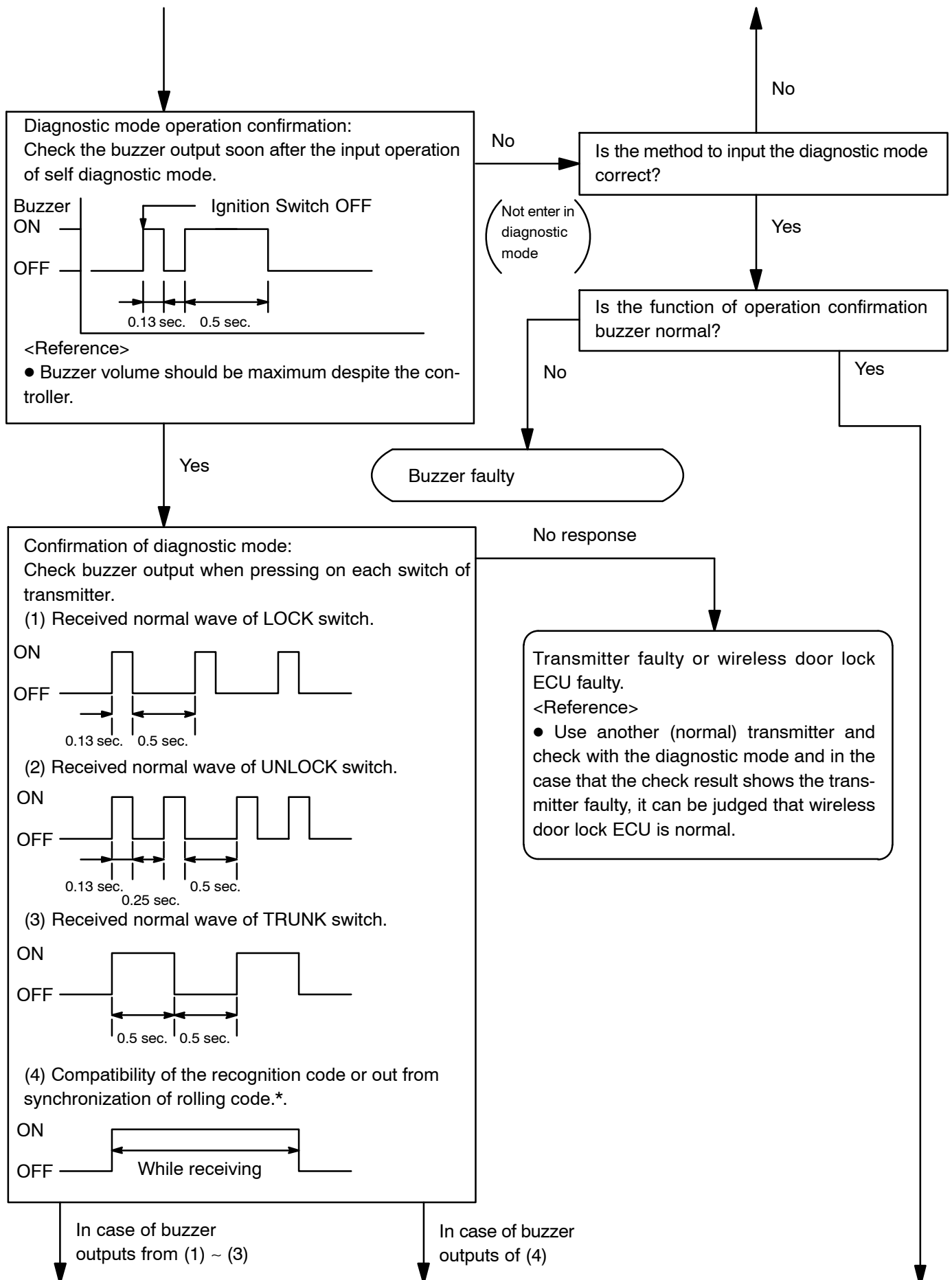
Yes

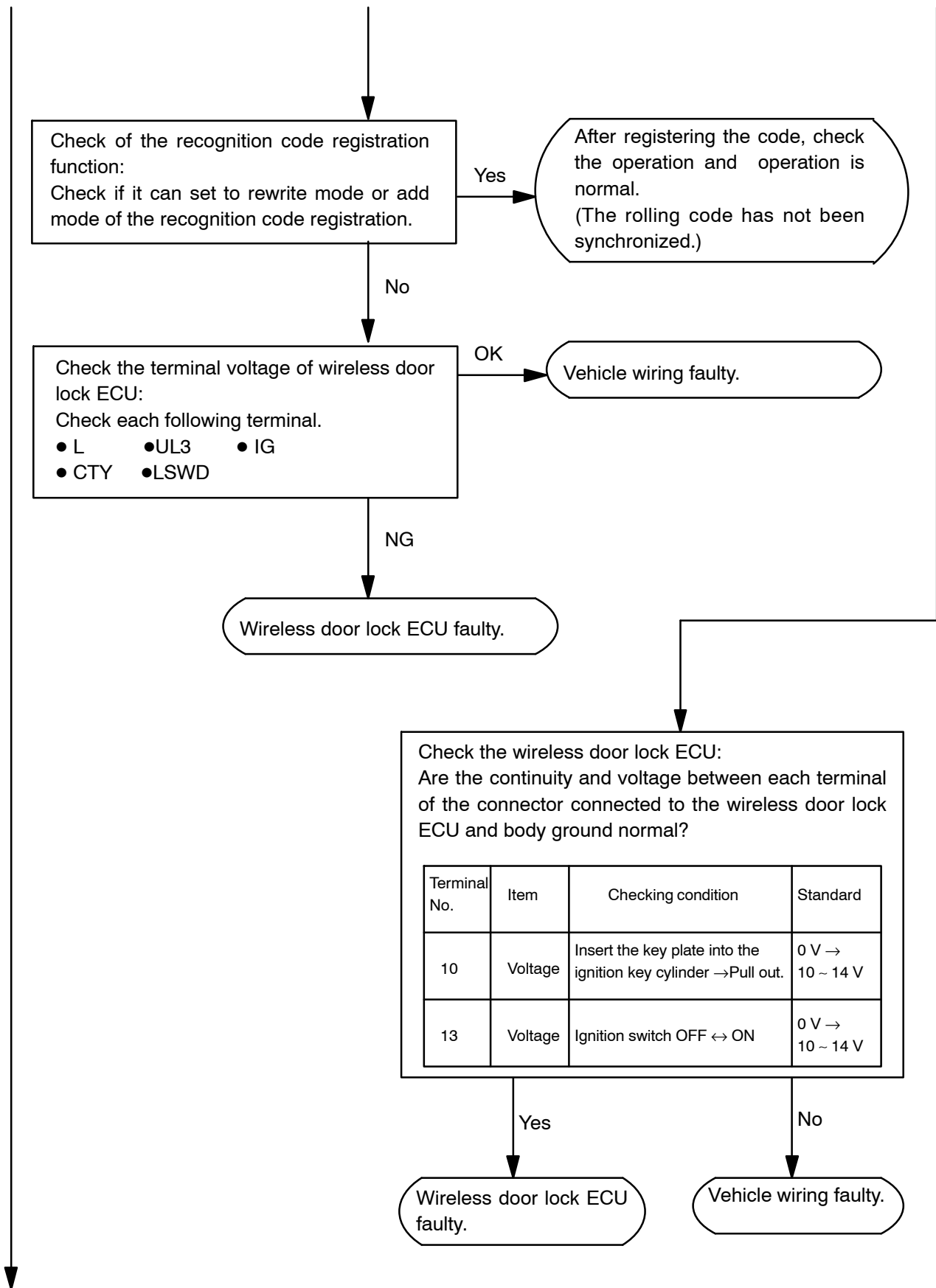
Normal

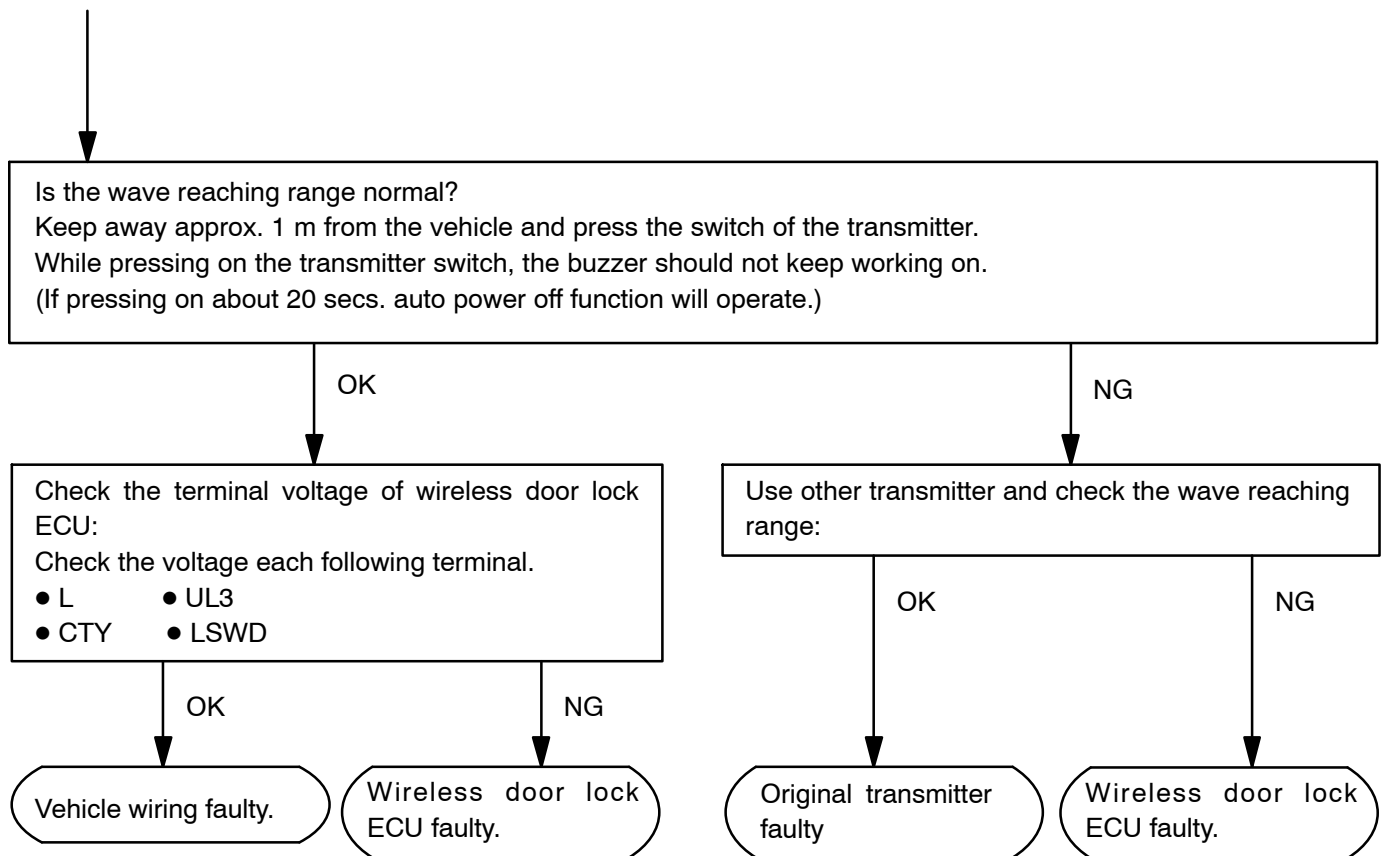
<Reference>

- Operative distance may differ depending on the operator, the way of holding or the position.
- Because of the use of weak electric wave, in case of strong wave or noise in the frequency used, there may be the case that operative distance gets shorter.









HINT:The rolling code is the code changing at each time when the wave is transmitted from the transmitter and changing when the wave is synchronized between transmitter side and ECU side.

When the rolling code is not synchronized between the transmitter and ECU, a symptom of "Only LOCK operation is available." appears.

In this case, it goes back to normal by synchronizing the rolling code.

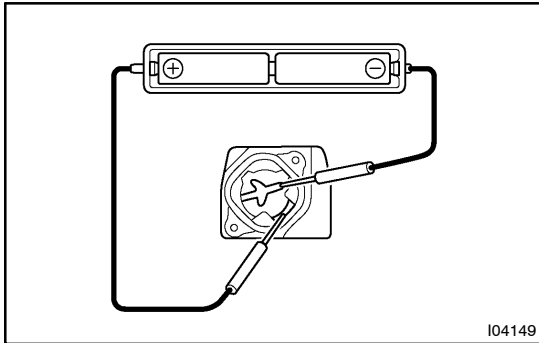
(The method to synchronize it is the same as of the registration of the recognition code.)

1. INSPECT WIRELESS DOOR LOCK TRANSMITTER OPERATION

HINT:

Refer to "Wireless door lock control receiver and transmitter replacement".

- (a) Using a screwdriver, remove the screw and cover.
- (b) Remove the battery (lithium battery).



- (c) Install a new or normal battery (lithium battery).

HINT:

When a new or normal battery can not be obtained, connect 2 new 1.5 V batteries in series, connect the battery (+) to the battery receptacle side terminal and battery (-) to the bottom terminal, then apply 3 V voltage to the transmitter.

- (d) In the location where is approx. 1 M away from driver's outside handle in the right direction, face the key plate of the transmitter to the vehicle, and check the transmitter operation when pressing transmission switch on the side of the transmitter body.

Standard:

- **Remote control of vehicle door lock can be operated.**
- **LED lights up more than once.**

HINT:

- The minimum operation distance differs according to operator, the way of holding, and location.
- As weak wave is used, operation distance might be shortened when noise is detected in strong wave or used frequency.

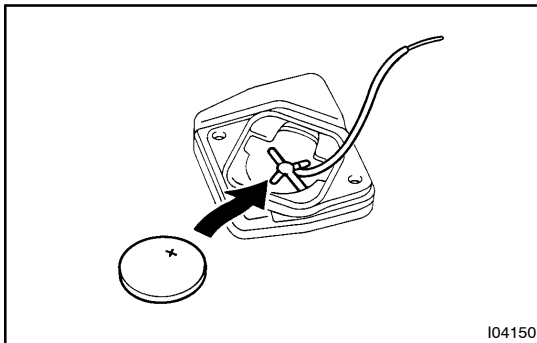
- (e) Install the battery (lithium battery).
- (f) Install a cover so that O-ring is not distorted or slipped off.
- (g) Using a screwdriver, tighten the screw.

2. CHECK BATTERY CAPACITY

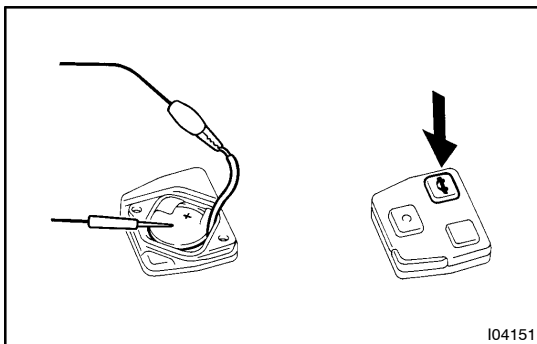
HINT:

- Make sure to use the TOYOTA electrical tester.
- With the battery unloaded, judge can not be made whether the battery is available or not on the test.
- When the transmitter is faulty, the energy amount left in the battery might not be checked correctly.
- On the lithium battery used for the transmitter, the voltage more than 2.5 V with the battery unloaded is shown on the tester until the energy is completely consumed.

Accordingly when inspecting the energy amount left in the battery, it is necessary to measure the voltage when the battery is loaded. (1.2 k Ω).



- Remove the screws and cover using a (-) driver.
- Remove the battery (lithium battery) from the transmitter.
- Connect the lead to the (-) terminal of the transmitter and install the battery.

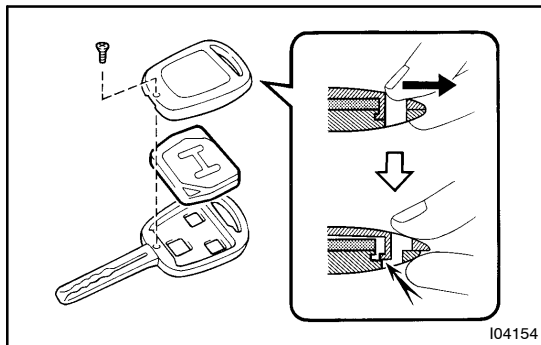


- Connect the (+) tester to the (+) battery (lithium battery), and (-) tester to the lead respectively.
- Press one of the transmitting switches on the transmitter for approx. 1 second.
- Press the transmitting switch on the transmitter again to check the voltage.

Standard: 2.1 V or more

HINT:

- When the temperature of the battery is low, the judge can not be made correctly.
When the outcome of the test is less than 2.1 V, conduct the test again after leaving the battery in the place at 18 °C for more than 30 minutes.
 - By auto power off function, the voltage becomes no load voltage (more than 2.5 V) condition after 0.8 seconds from the switch was pressed.
Make sure to read the voltage before of it.
 - High voltage might be shown 1 to 2 times after leaving the battery, judge should be made with the voltage shown at the 3rd time or later.
- (g) Disconnect the lead.
- (h) Set the battery (lithium battery) in the transmitter.
- (i) Install the cover, so that the O-ring is not distorted or slipped off.
- (j) Using a screwdriver, tighten the screws.



3. REPLACE TRANSMITTER (LITHIUM) BATTERY

NOTICE:

Special caution should be taken for handling each component as they are precision electronic components.

(a) Using a screwdriver, remove the screw and cover.

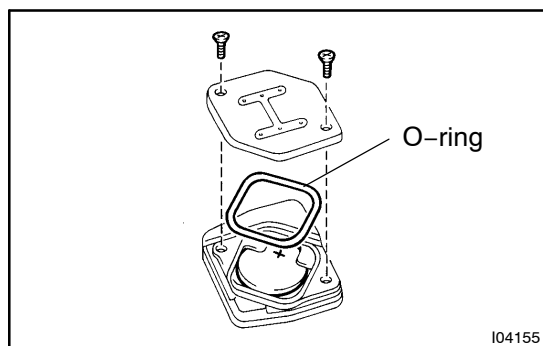
NOTICE:

Do not pry out the cover forcibly.

HINT:

Push the cover with a finger as shown in the illustration, so that there becomes clearance, then pry out the cover from that clearance.

(b) Remove the transmitter.

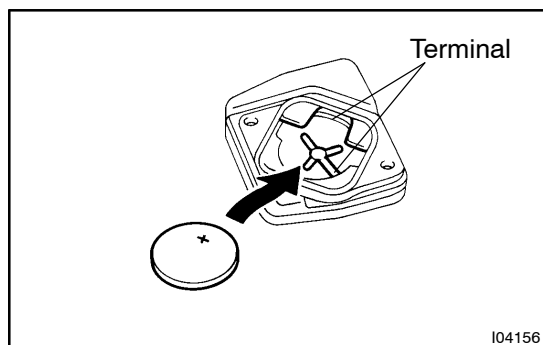


(c) Using a screwdriver, remove the 2 screws and cover.

(d) Remove the battery (lithium battery).

NOTICE:

- **Do not push the terminals with a finger.**
- **If prying up the battery (lithium battery) forcibly to remove, the terminals are deformed.**



(e) Install a battery (lithium battery) as shown in the illustration.

NOTICE:

Face the battery upward. Take care not to deform the terminals.

(f) Check that O-ring is not distorted or slipped off, and install the cover.

(g) Using a screwdriver, tighten the 2 screws.

NOTICE:

When the screws are tightened loosely, it might cause faulty contact of battery (lithium battery) and terminals.

(h) Assemble the transmitter to the key plate and the cover.

(i) Using a screwdriver, tighten the screw.

4. REGISTRATION OF RECOGNITION CODE

Follow the flow chart on the following page to register the transmitter recognition code with the wireless door lock ECU.

HINT:

- If the prescribed conditions are not entered while registering the transmitter code, the wireless door lock ECU returns to normal operation.
- There are 4 modes: add mode, rewrite mode, confirmation mode and erase mode; the mode to use is decided after the recognition code is registered.
- If maximum of 4 recognition codes can be registered.

REFERENCE:

- The add mode is used to retain codes already registered while you register new recognition codes. However, if the number of registered codes exceeds 4 codes, previous registered codes are correspondingly erased in order, starting from the first registered code.
- The rewrite mode is used to erase all previous registered codes before registering new recognition codes. This mode is used before registering new transmitter or wireless door lock ECU.
- The confirmation mode is for confirming how many recognition codes are already registered before you register additional recognition codes.
- The erase mode is used to erase all registered codes and cancels the wireless door lock operation. Use this mode when the transmitter is lost.

